

MONTHLY MEMBERSHIP PROGRESS REPORT

LOCATION INDIA

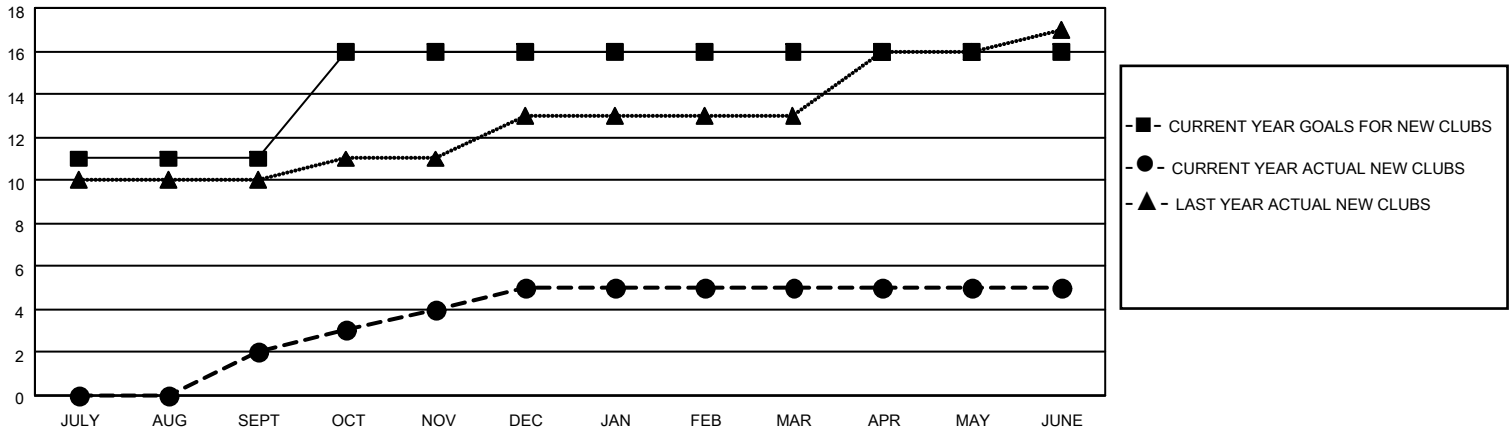
District 321A2

Results as of: 6/30/2023

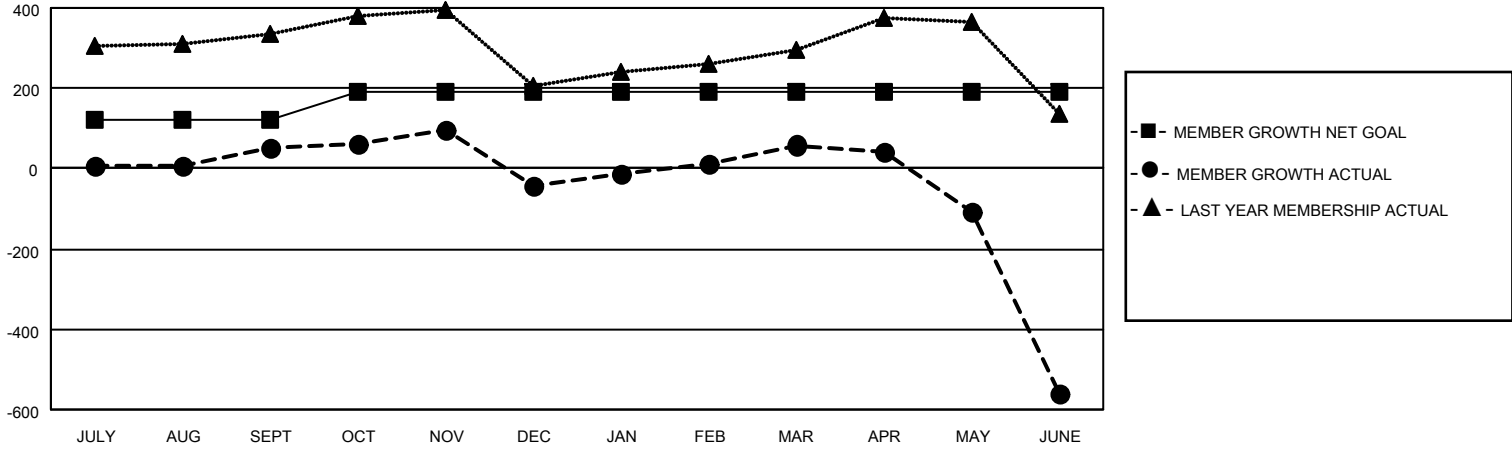
Clubs			
RESULTS FOR 2022-2023			
QUARTER	NEW CLUB GOAL	NEW CLUBS	DROPPED CLUBS
JULY/AUG/SEPT	11	2	4
OCT/NOV/DEC	5	3	2
JAN/FEB/MAR	0	0	1
APR/MAY/JUNE	0	0	2

Members			
RESULTS FOR 2022-2023			
QUARTER	MEMBER GROWTH NET GOAL	MEMBER GROWTH ACTUAL	DROPPED MEMBERS ACTUAL (including transfers)
JULY/AUG/SEPT	120	135	61
OCT/NOV/DEC	70	115	202
JAN/FEB/MAR	0	171	57
APR/MAY/JUNE	0	107	696

GOALS AND ACTUAL NEW CLUBS CUMULATIVE



GOALS AND ACTUAL MEMBERS CUMULATIVE



DROPPED CLUBS: 9

81 CLUBS OF 155 ADDED 1 OR MORE NEW MEMBERS

GENDER DISTRIBUTION

MALE	2,386 (66.31%)
FEMALE	1,212 (33.69%)
NON BINARY	0 (0.00%)
PREFER NOT TO ANSWER	0 (0.00%)

DROPPED MEMBERS

[CLICK HERE FOR CUMULATIVE MEMBERSHIP DATA](#)

DECEASED	10
CLUB CANCELLED	149
OTHER	857
TOTAL	1,016

TOTAL FAMILY UNIT MEMBERS 2,343

FAMILY MEMBERS PAYING HALF DUES 1,456